

TYPICAL SECTION AT
CHANGE IN JACKET COL. O.D.
N.T.S.

NOTE:
FOR GENERAL NOTES, WELDING NOTES
AND PAINT NOTES SEE DWG 0001.

NOTE:
JACKET LEG AND DIAGONAL MEMBER
WALL THICKNESS HAVE BEEN INCREASED
BY 1/2" IN THE SPLASH ZONE.

SEE WELDING NOTE NO. 3
DWG. 0001 TYP FOR
14# & 16# WELDS TO
35 3/4# @ EL(+10'-0)

SEE WELDING NOTE NO. 3
DWG. 0001 TYP FOR
18# & 20# WELDS TO
34 1/2# @ EL(-) 40'-0

PILE SPACER TYPE 'A' (TYP)
@ EL(+10'-0), EL(-) 40'-0
& EL(-) 110'-0 (SEE DET
DWG. 1007)

SEE WELDING NOTE NO. 3
DWG. 0001 TYP FOR
20# & 24# WELDS TO
34 1/2# @ EL(-) 110'-0

PILE SPACER TYPE 'B'
(TYP) @ EL(-) 190'-0
SEE DET DWG 1007

ELEVATION '1001-A'
3/32 = 1'-0

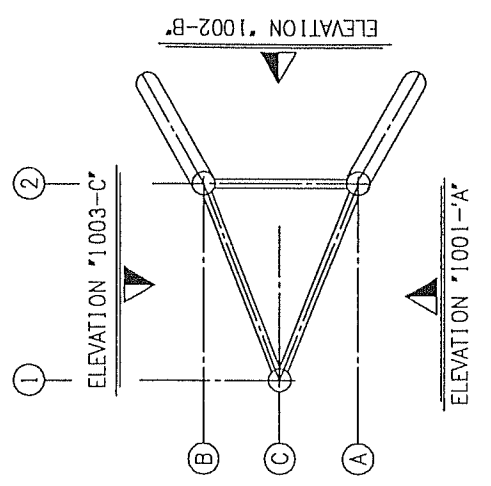
APR 28 1994

APPROVED
FOR CONSTRUCTION

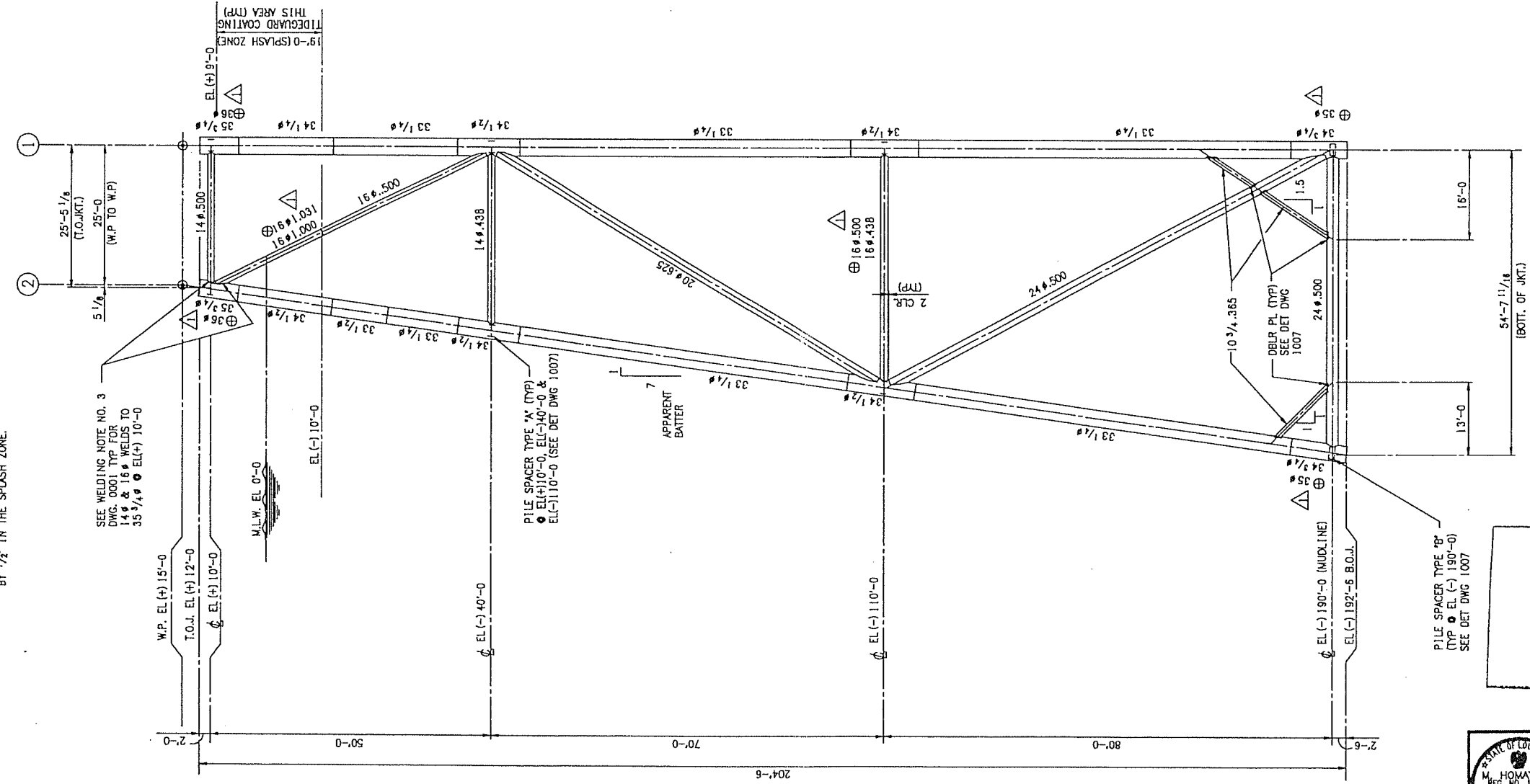
	3-PILE WELL PROTECTOR PLATFORM	
	WEST CAMERON	BLOCK 566 C 190' W.D.
	FOR CNG PRODUCING COMPANY NEW ORLEANS, LA.	
	UNDER CONTRACT TO McDERMOTT INCORPORATED NEW ORLEANS, LA.	
APPROVED BY	DATE	PREPARED BY
ENGINEERING APPROVAL		MARINE ENGINEERING-NEW ORLEANS
PROJECT	DATE	SCALE
STRUCTURAL	12/21/94	1/8" = 1'-0"
DESIGNED BY	DATE	CHECKED BY
W.S.	2/23/94	G. BARANYAI
PROJECT NO.	SHEET NO.	TOTAL SHEETS
C.N.G. 6, 7, 1, 8, 11	10 X	1, 0, 0, 1
JACKET VERTICAL FRAMING (DWG 1 OF 3)		

REV	BY	DATE	REVISION	DRW	CHKD	PRCD	MECH	ELC	INSTR	APPV	DATE	REV	BY	DATE	REVISION	DRW	CHKD	PRCD	MECH	ELC	INSTR	APPV	DATE
W.S.	2/25/94	BID ISSUE		GB	PC					DMC	1/27/94												
SH	4/15/94	FABRICATION ISSUE		GB	PC					DMC	1/27/94												
LP	4/28/94	ADDED FAB. SUBSTITUTION																					

THE SIGNED ORIGINAL
OF THIS DRAWING IS
ON FILE AT THE
NEW ORLEANS OFFICE



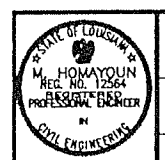
NOTE:
 JACKET LEG AND DIAGONAL MEMBER
 WALL THICKNESS HAVE BEEN INCREASED
 BY 1/2" IN THE SPLASH ZONE.



ELEVATION "1003-C"
 3/32 = 1'-0"

APR 28 1994

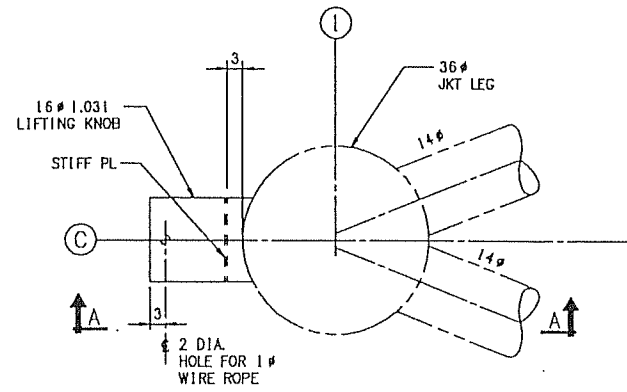
APPROVED
 FOR CONSTRUCTION



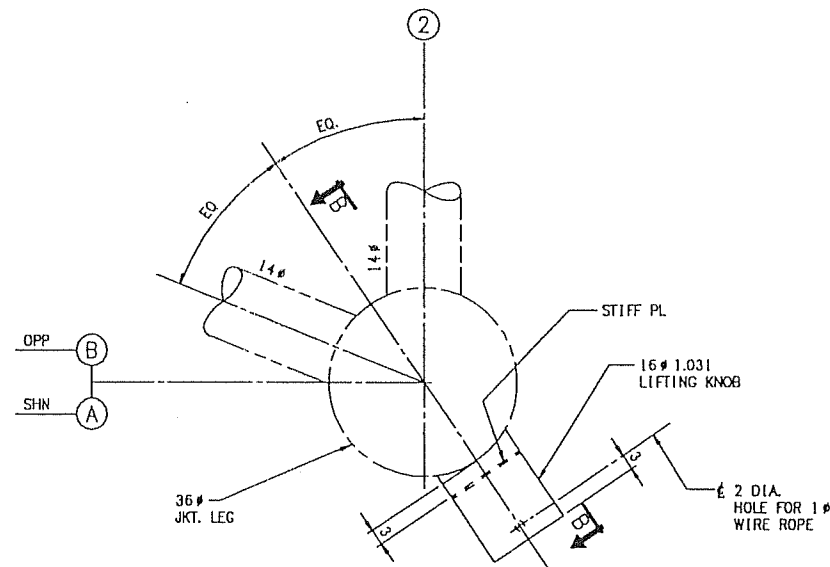
3-PILE WELL PROTECTOR PLATFORM			
WEST CAMERON	BLOCK 566 C	190' W.D.	
FOR CNG PRODUCING COMPANY NEW ORLEANS, LA.			
UNDER CONTRACT TO McDERMOTT INCORPORATED NEW ORLEANS, LA.			
PREPARED BY MARINE ENGINEERING-NEW ORLEANS			
PROJECTED BY W.S.	DATE 2/23/94	ORDERED BY G BARANYAI	DATE 3/23/94
DESIGNED BY D.M.C.	DATE 3/23/94	ENGINEER BY P. CHANDER	DATE 3/23/94
PROJECT NO. C, N, G, 6, 7, 1, 8, 11 D X			
SHEET NO. 1, 0, 0, 3			
JACKET VERTICAL FRAMING (DWG 3 OF 3)			

REV	BY	DATE	REVISION	BY	DATE	BY	DATE	BY	DATE	BY	DATE	BY	DATE	BY	DATE	BY	DATE	BY	DATE	BY	DATE
1	W.S.	2/23/94	BID ISSUE	GB	PC																
2	SH	4/15/94	FABRICATION ISSUE	GB	PC																
3	RAH	2/28/94	ADDED FAB. SUBSTITUTION																		

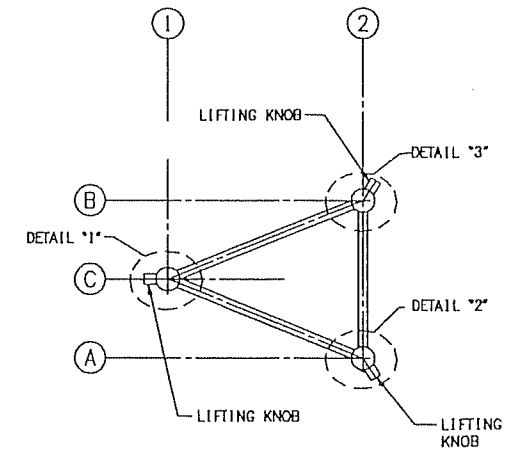
THE SIGNED ORIGINAL
 OF THIS DRAWING IS
 ON FILE AT THE
 NEW ORLEANS OFFICE.



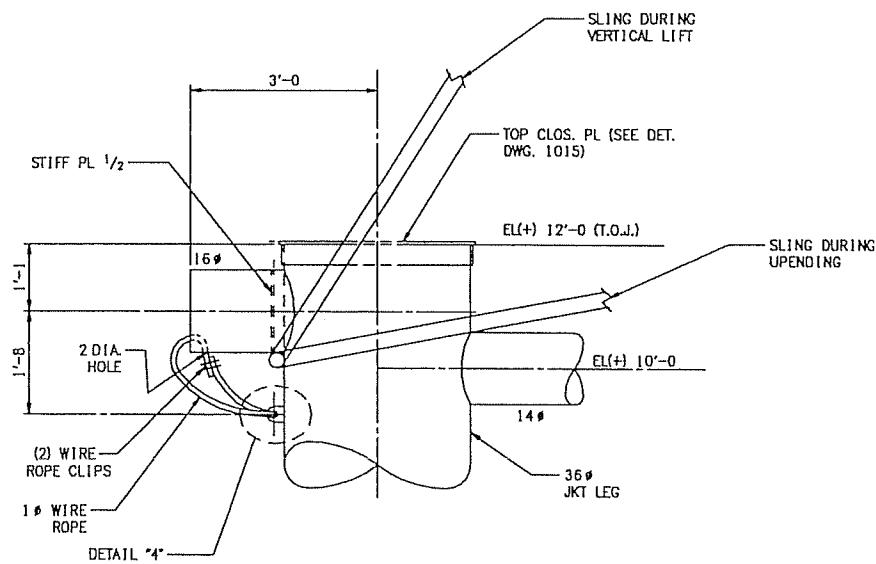
DETAIL "1"
3/4 = 1'-0



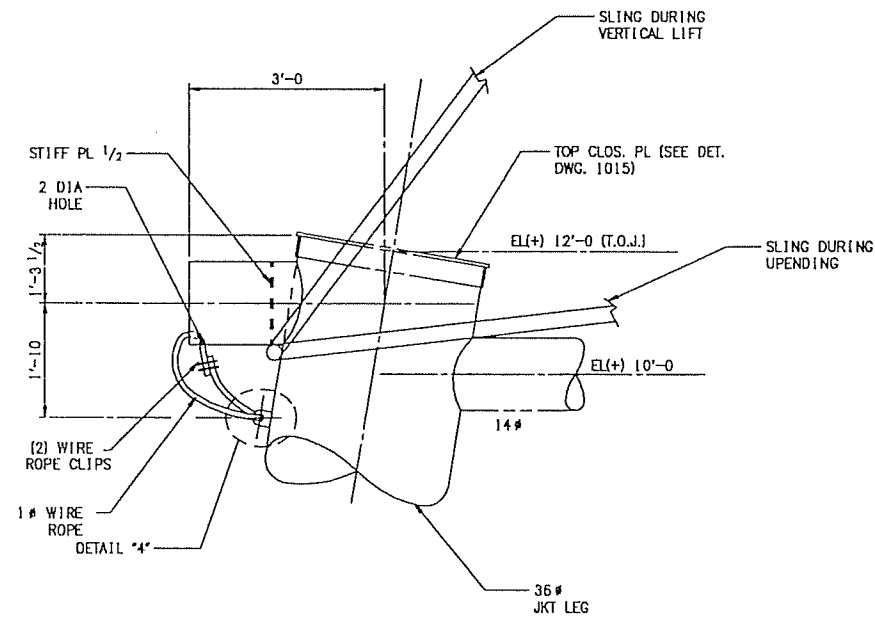
DETAIL "2" (SHN)
DETAIL "3" (OPP)
3/4 = 1'-0



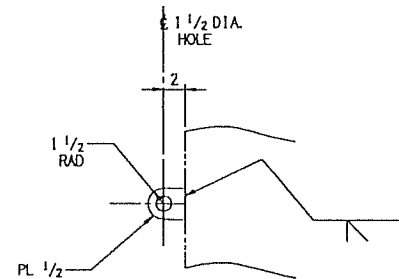
KEY PLAN
3/32 = 1'-0



SECTION "A-A"
3/4 = 1'-0



SECTION "B-B"
3/4 = 1'-0



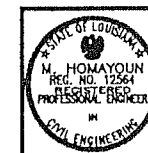
DETAIL "4"
1 1/2 = 1'-0

APPROVED
FOR CONSTRUCTION

MAY 3 1994

LIFT NOTES

1. MAXIMUM HOOK LOAD = 185 SHORT TONS
2. MAXIMUM STATIC SLING LOAD = 94.0 SHORT TONS
3. SLING: (1) 3" X 55'-0 LG & (1) 2" X 20'-0 LG @ LEG C-1.
(2) 3" X 50'-0 LG & (2) 2" X 20'-0 LG @ LEG A-2 & B-2.
4. MANUFACTURER'S MINIMUM RATED BREAKING STRENGTH OF 3" SLING = 376 SHORT TONS.
5. (3) 3 1/2 LOWERY BROS SAFETY CHAIN SHACKLE WITH A SAFE WORKING LOAD OF 110 SHORT TONS OR EQUAL
6. INSTALLATION CONTRACTOR TO VERIFY LIFT WEIGHT AND ADEQUACY OF LIFTING KNOBS FOR THE CONTRACTOR'S PROPOSED LIFTING PROCEDURE.



3-PILE WELL PROTECTOR PLATFORM
WEST CAMERON BLOCK 586 C 190' W.D.
FOR
CNG PRODUCING COMPANY
NEW ORLEANS, LA.
UNDER CONTRACT TO
McDERMOTT INCORPORATED
NEW ORLEANS, LA.

APPROVED: 4/11/94
ENGINEERING APPROVAL: [Signature]
PROJECT: CNG
DATE: 3/17/94
CHECKED BY: G. BARANYAI
DATE: 3/22/94
DESIGNED BY: P. CHANDER
DATE: 3/22/94
PROJECT NO.: C, N, G, 6, 7, 1, B, 1, D, X, 1, 0, 1, 2, 1
SCALE: NTD
SHEET NO.: 1
TOTAL SHEETS: 1

REV	BY	DATE	DESCRIPTION	APPV	DATE	REV	BY	DATE	DESCRIPTION	APPV	DATE	REV	BY	DATE	DESCRIPTION	APPV	DATE
1	W.S.	3/25/94	BID ISSUE	GB	PC												
2	SH	4/15/94	FABRICATION ISSUE	GB	PC												
3	RF	4/28/94	REVISED AND REDRAWN														

THE SIGNED ORIGINAL OF THIS DRAWING IS ON FILE AT THE NEW ORLEANS OFFICE

JACKET TOP LIFTING/UPENDING KNOBS

